

# LA MANO POTTERY

## Greetings!

We hope that everyone had a fantastic summer!


Our wheel classes are nearly all full and we still have spaces available in our handbuilding classes (Tuesdays-Thursdays from 7-9pm, Fridays from 4-6pm, Saturdays from 12-2pm). All of the classes meet once a week.

Our Friday afternoon handbuilding class meets from 4-6pm. The dates for this session are: October 21- December 16th. Maybe this year, you will be able to make all of your holiday gifts!

Another class we would like you to know about is our Sunday Parent/Teen Wheel class that meets from 10:30-12:30pm on October 2nd - November 20th. Parents can learn to throw while taking a class with their child. This is a wonderful way to spend time with your teen.

Please check out our full schedule listed below and on our website, as it is not too late to register. You can sign up for classes online at [lamanopottery.com](http://lamanopottery.com).

Fall is such an exciting time to be at the studio. Oktoberfest is right around the corner - save the date: Friday, October 14th, 6-9pm.



**Oktoberfest**

save the date:  
Friday  
October 14<sup>th</sup>  
6-9 pm

Purchase a handmade mug, stein, or cup, and we'll fill it to the brim!

**LA MANO POTTERY**  
237 West 18th Street  
[www.lamanopottery.com](http://www.lamanopottery.com)

This is a fun party to attend at the studio - buy a mug & get a drink! Everyone at the studio is already making mugs - no two alike!! We hope you will be able to join us.

Yours in the mud,  
Diane, Julie, & Peggy

## Fall Class Schedule

A \$20 firing fee deposit is required for each class.

### Wheel | Fall 2011

Day	Dates	Time	Notes
Monday	9/12-10/31	6-8 pm	8 weeks, \$300
Tuesday AM	9/6-10/25	10:30am-12:30 pm	8 weeks, \$300
Tuesday	9/6-10/25	7-9 pm	8 weeks, \$300
Wednesday	9/7-11/2	7-9 pm	8 weeks, \$300 (no class 9/28)
Thursday	9/8-10/27	7-9 pm	8 weeks, \$300
Saturday	9/10-10/29	10:30am-12:30 pm	8 weeks, \$300
Sunday	9/11-10/30	6-8 pm	8 weeks, \$300

### Handbuilding | Fall 2011

Day	Dates	Time	Notes
Tuesday	9/13-11/1	7-9 pm	8 weeks, \$300
Wednesday	9/14-11/9	7-9 pm	8 weeks, \$300 (no class 9/28)
Thursday	9/15-11/3	7-9 pm	8 weeks, \$300
Friday	10/21-12/16	4-6 pm	8 weeks, \$300
Saturday	9/10-10/29	12-2 pm	8 weeks, \$300

## Kids' Pottery Classes

### Handbuilding | ages 7 and up

Day	Dates	Time	Notes
Thursday	9/15-11/10	4-5:15 pm	8 weeks, \$280 (no class 9/29)

### Wheel | ages 12 and up

Days	Dates	Time	Notes
Tuesday	9/13-11/1	3:45-5:45 pm	8 weeks, \$300

### Parent/Child Wheel | ages 12 and up

Days	Dates	Time	Notes
Sunday	10/2-11/20	10:30 am-12:30 pm	8 weeks, \$570 for parent & child

### Sunday One-Day Workshops | ages 6 and up

Date	Time	Notes
September 18	10:30 am-noon	\$50 per child (\$75 for two siblings)
October 16	10:30 am-noon	\$50 per child (\$75 for two siblings)
November 13	10:30 am-noon	\$50 per child (\$75 for two siblings)

## In the Gallery

For August and September, we have continued to feature the beautiful work of our studio potters: Annabelle Bascou-Fonte, Peggy Clarke, Julie Hadley, Nonna Hall, Danica Holoviak, Jessie Lazar, and Diane Waller.



Annabelle Bascou-Fonte



Peggy Clarke



Julie Hadley



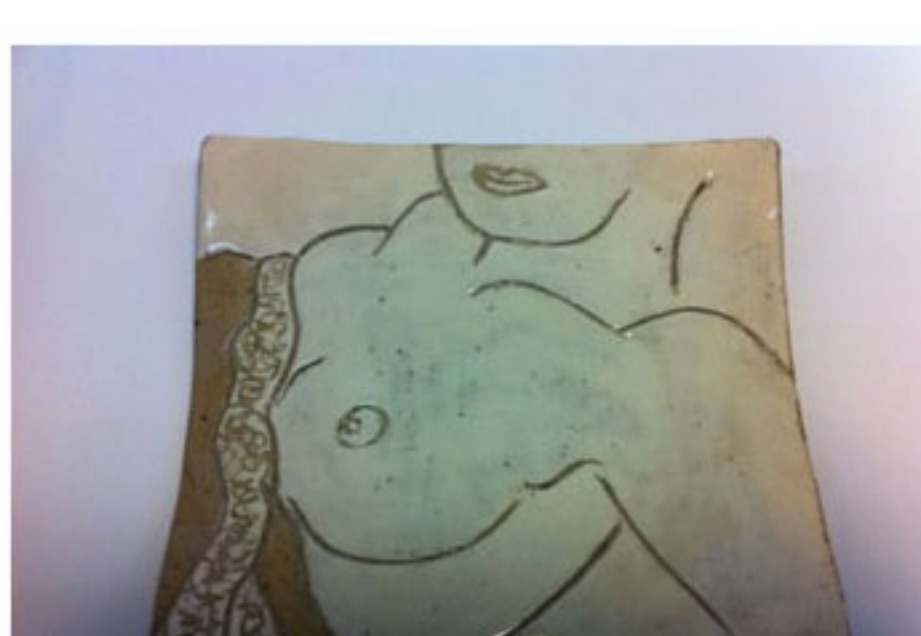
Nonna Hall



Danica Holoviak



Jessie Lazar



Diane Waller

Please visit the photo galleries to see more of their work that has been on display at [lamanopottery.com](http://lamanopottery.com). We hope you can stop by to see the work in person (all of the pottery is for sale!).

## Potter's Tip of the Month



### Glazing

When glazing the inside of a vessel-shaped piece, make sure the excess glaze is swirled around the inside of the piece and poured out. This will prevent crawling or beading of the glaze where the glaze will naturally pool.

